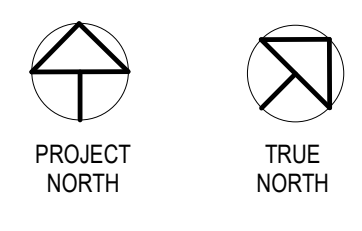


GENERAL NOTES:
1. FURNITURE FOR PLACEMENT REFERENCE ONLY.

1 LEVEL 01 FURNITURE PLAN
3/16" = 1'-0"



COPYRIGHT & REPRODUCTION OF DRAWINGS: This drawing is the property of HUSSEY GAY BELL ARCHITECTURAL, and it is not to be reproduced or copied in whole or in part. It is not to be used on any other project. Do not scale dimensions from prints. Plans and details are not always drawn to scale. Use dimensions given or call the architect for further confirmation.

HUSSEY GAY BELL
— Established 1958 —
329 Commercial Drive, Savannah, GA 31406 T: 912.354.4626

REVISIONS: ▾

NO.	DATE	DESCRIPTION

DESIGNED	DRAWN	CHECKED
EL	EL	AS
DATE: 09/09/2024		
JOB NO. 223 4802 06		
SCALE: AS NOTED		

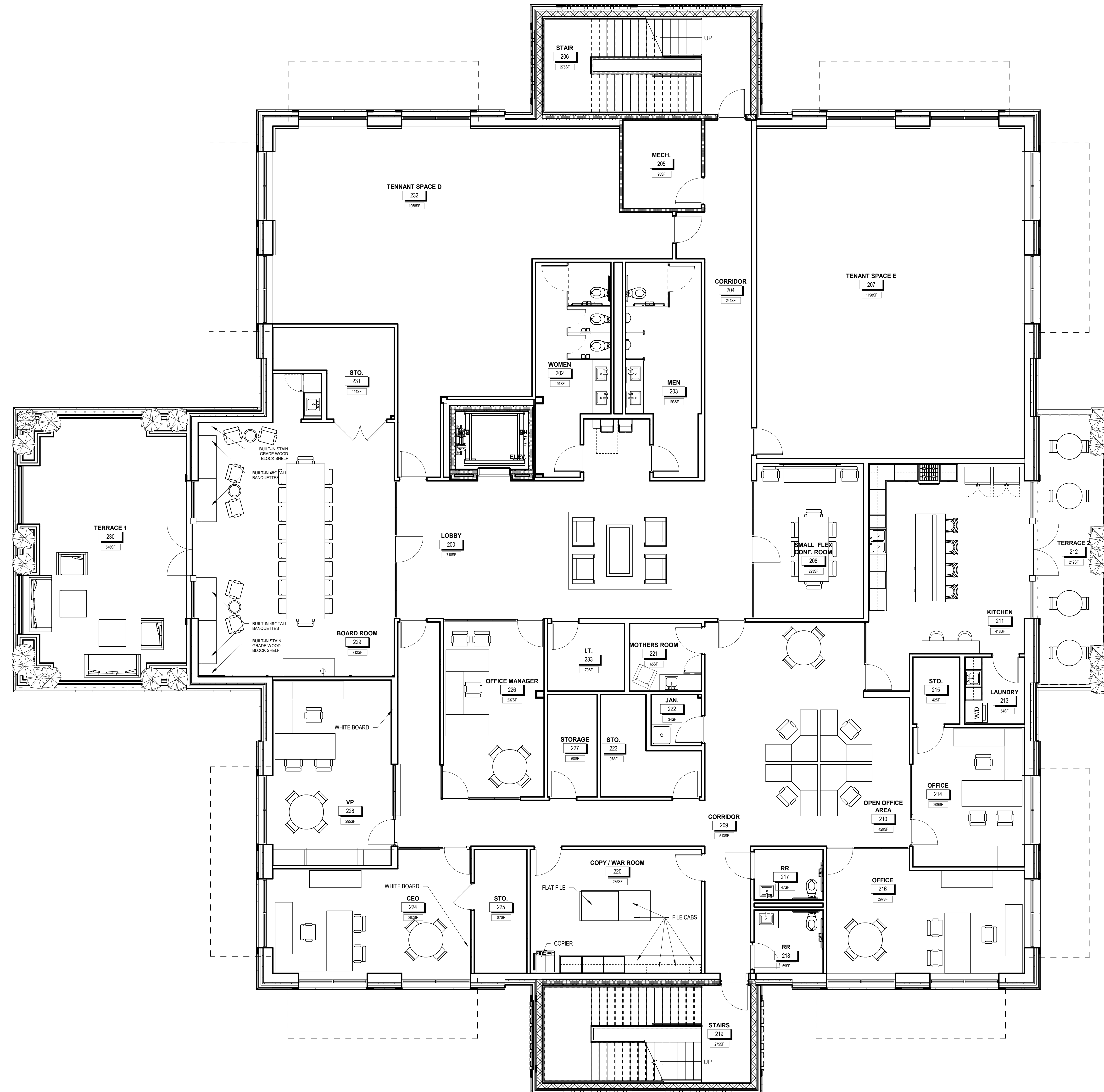
ECIDA OFFICE BUILDING
EFFINGHAM CO. INDUSTRIAL DEVELOPMENT AUTH.
GA HWY 21 & TRADE CENTER PKWY
EFFINGHAM COUNTY, GA 31326

FURNITURE PLANS

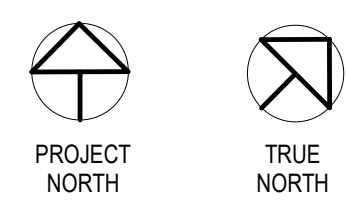
DRAWING NUMBER

A10.11

GENERAL NOTES:
 1. FURNITURE FOR PLACEMENT REFERENCE ONLY.



1 LEVEL 02 FURNITURE PLAN
 3/16" = 1'-0"



COPYRIGHT & REPRODUCTION OF DRAWINGS: This drawing is the property of HUSSEY GAY BELL, ARCHITECTURAL, and is not to be reproduced or copied in whole or in part. It is not to be used on any other project. Do not scale dimensions from prints. Print and detail are not always drawn to scale. Use dimensions given or consult the architect for further confirmation.

HUSSEY GAY BELL
Established 1958

329 Commercial Drive, Savannah, GA 31406 T: 912.354.4626

REVISIONS: >

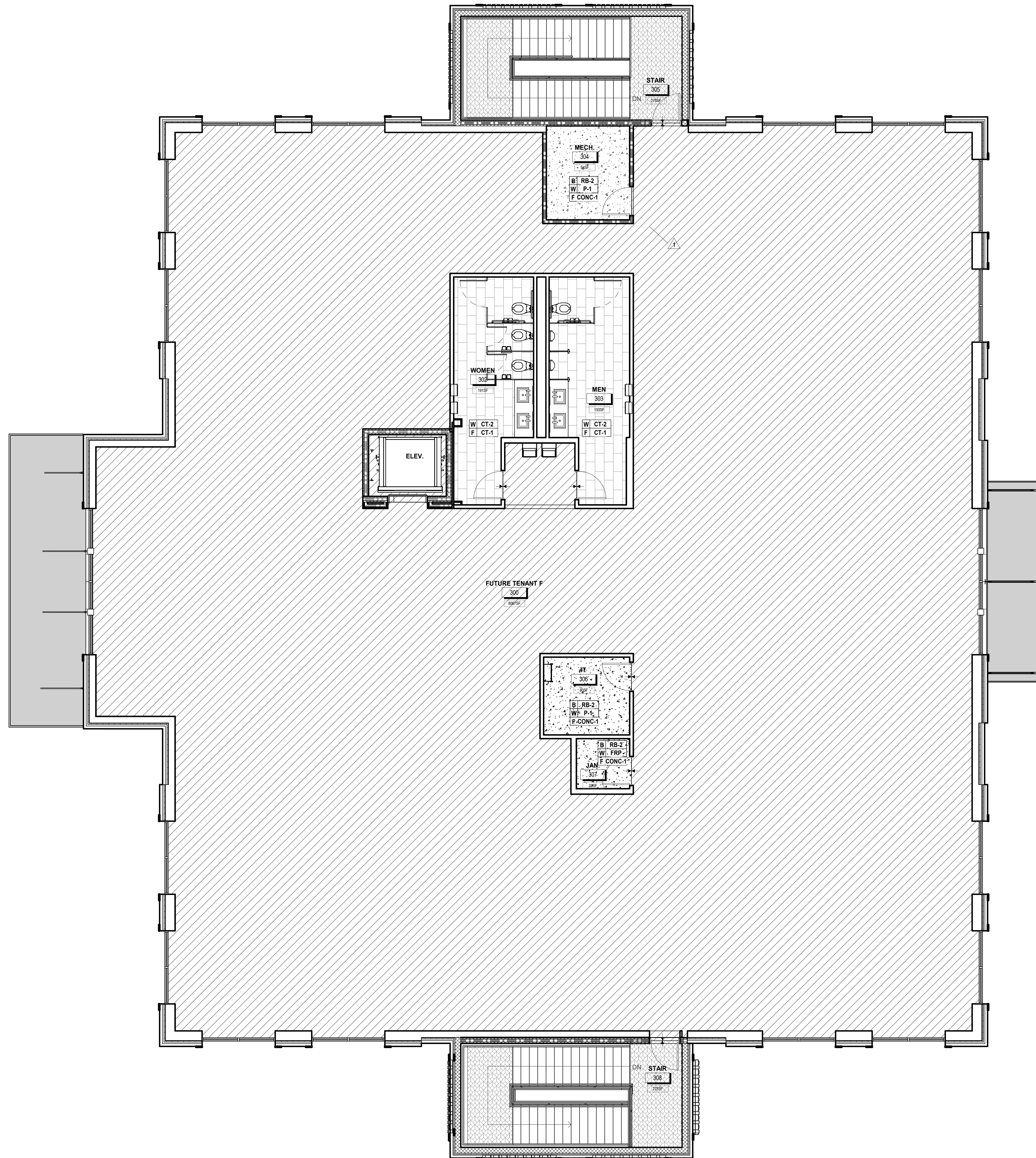
DESIGNED	DRAWN	CHECKED
EL	EL	AS
DATE: 09/09/2024		
JOB NO. 223 4802 06		
SCALE: AS NOTED		

ECIDA OFFICE BUILDING
 EFFINGHAM CO. INDUSTRIAL DEVELOPMENT AUTH.
 GA HWY 21 & TRADE CENTER PKWY
 EFFINGHAM COUNTY, GA 31326

FURNITURE PLANS

DRAWING NUMBER

A10.12



FINISH LEGEND

- CARPET (CPT-1)
- CARPET (CPT-2)
- CARPET (CPT-3)
- CARPET (CPT-4)
- LUXURY VINYL TILE (LVT-1)
- LUXURY VINYL TILE (LVT-2)
- CERAMIC/PORCELAIN TILE (CT)
- CONCRETE (CONC)
- N.I.C. (NOT IN CONTRACT)
- WALK OFF MAT (WOM-1)

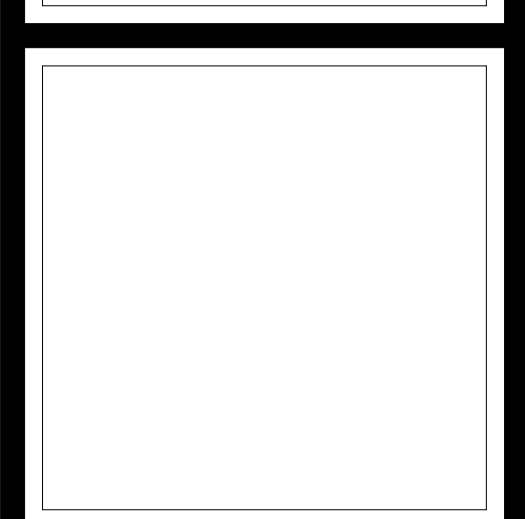
FINISH PLAN ABBREVIATION LEGEND

- B = WALL BASE
- CONC = CONCRETE
- CPT = CARPET
- CT = PORCELAIN TILE
- F = FLOORING
- LVT = LUXURY VINYL TILE
- M = MISC. FINISH
- PNT = PAINT
- RB = RUBBER WALL BASE
- W = WALL FINISH
- WC = WALL COVERING
- WOM = WALK OFF MAT
- WT = CERAMIC WALL TILE

FINISH TAG

X XXXX — LOCATION/MATERIAL

COPYRIGHT & REPRODUCTION OF DRAWINGS: This drawing is the property of HUSSEY GAY BELL, ARCHITECTURAL, and is not to be reproduced or copied in whole or in part. It is not to be used on any other project. Do not make alterations to this drawing without the written consent of HUSSEY GAY BELL, ARCHITECTURAL.



HUSSEY GAY BELL
Established 1958
 329 Commercial Drive, Savannah, GA 31406 T: 912.354.4626

REVISIONS:

NO.	DESCRIPTION	DATE
1	PERMIT REV. 09/09/24	

DESIGNED	DRAWN	CHECKED
EL	EL	AS
DATE: 09/09/2024		
JOB NO. 223 4802 06		
SCALE: AS NOTED		

ECIDA OFFICE BUILDING
 EFFINGHAM CO. INDUSTRIAL DEVELOPMENT AUTH.
 GA HWY 21 & TRADE CENTER PKWY
 EFFINGHAM COUNTY, GA 31326

LEVEL 03 FINISH PLAN

1 LEVEL 03 FINISH PLAN
 3/16" = 1'-0"

PROJECT NORTH
 TRUE NORTH

PERMIT SUBMITTAL

DRAWING NUMBER
A9.23